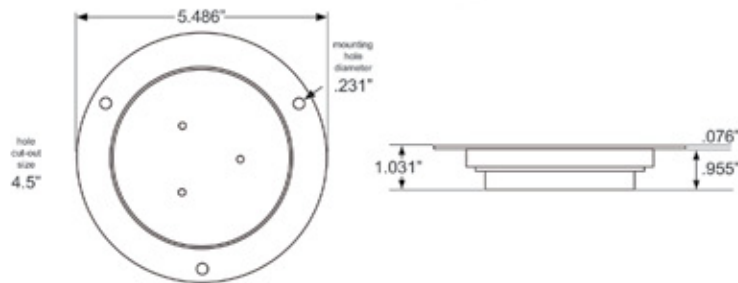


LED Interior Light

Ultrabright, flange mount LED area light designed for dependable use in heavy duty applications. Three-diode design provides bright light output while conserving power. Diodes produce little heat and last up to 100,000 hours—no bulbs to replace. Corrosion proof, polycarbonate housing and lens—same material as bullet proof glass. Operating voltage 11-14VDC (low voltage cut-off 10.5-11.0VDC). Hard wired design includes both lead and ground wires for mounting to all surfaces.



Specifications

Model No.	Description	Diodes	Amp Draw	Pack	Qty.
ILL-42CB	LED interior light	3	.582A / 12.8VDC	Bulk	10



LIFETIME LED WARRANTY

- LED's are Brighter than Conventional Lights
- No Bulbs to Replace—Ever!
- Use 90% Less Energy
- Safe, Dependable Service
- 100% Maintenance Free

OPTRONICS ILL-42CB
THREE-DIODE FLANGE MOUNT LED
UTILITY LIGHT

VS.

TRUCK-LITE 44339C
SIX-DIODE FLANGE MOUNT LED
UTILITY LIGHT

BRIGHTER...

Optronics ILL-42CB is
55% brighter than
competitor's light*.

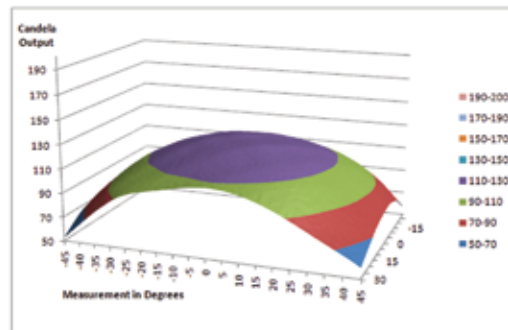
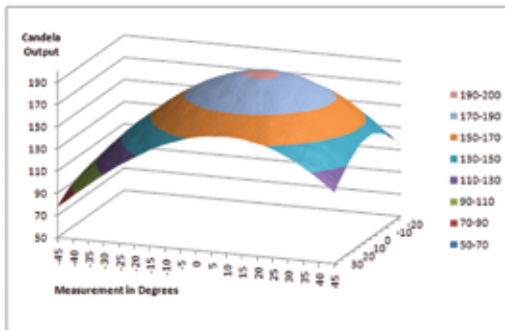
*As measured in candelas at HV 0.

Optronics ILL-42CB is
brighter at all points, with
a wider useful light range.

Products	Optronics Utility Light ILL-42CB	Truck Lite Utility Light 44339C
Test Points Degrees	Luminous Intensity, Candelas	
10U, 45L	92.05	72.83
10U, V	158.05	128.04
10U, 45R	96.44	74.6
H, 45L	112.26	74.61
H, V	202.51	130.4
H, 45R	112.25	77.8
10D, 45L	98.78	72.47
10D, V	187.64	128.2
10D, 45R	101.61	77.33

OPTRONICS
ILL-42CB

AMP DRAW:
.582A/12.8V

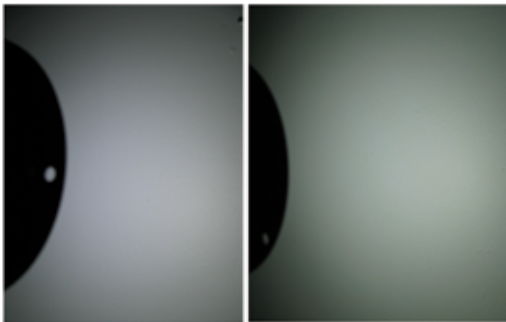


TRUCK-LITE
44339C

AMP DRAW:
.515A/12.8V

AND WHITER.

Optronics ILL-42CB produces visibly
whiter light for improved clarity.



White Boundary

X	Y
0.310	0.348
0.310	0.283
0.440	0.385
0.500	0.385
0.500	0.440
0.453	0.440
0.310	0.348

Optronics ILL-42CB
Test Measurement

X	Y
0.313	0.358

Light

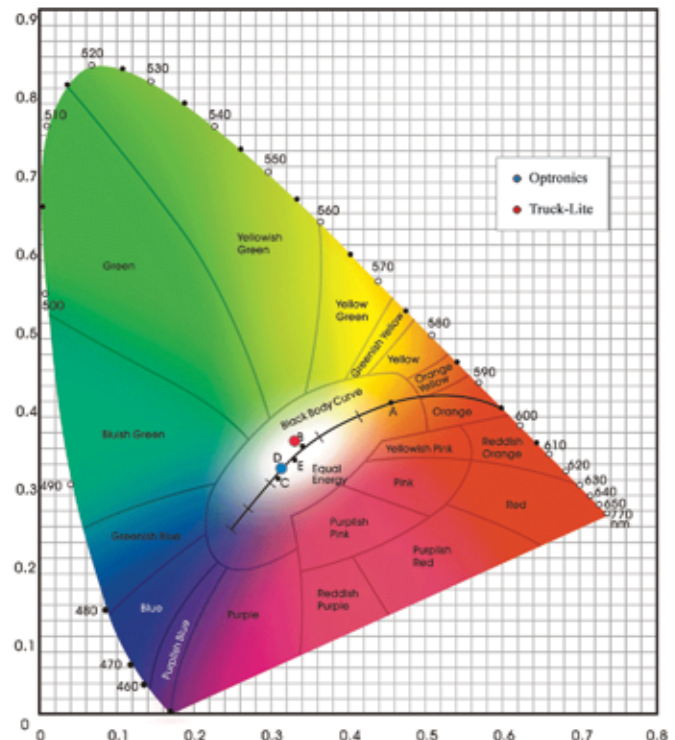
Test Distance 4ft.

Truck-Lite 44339C
Test Measurement

X	Y
0.320	0.348

Light

Test Distance 4ft.



Plotting test results on a chromacity
diagram illustrates how slight shifts in
color affect the quality of light. Truck-Lite
sample strayed toward green values.