

Optronics®

Better Value • Better Options • Better Lighting



LED

UTILITY LIGHTS



TLL42FS

Swivel Base Utility/Work Light



- Flood beam pattern
- Polycarbonate lens
- Die cast aluminum housing with powder coat finish
- IP67 rating
- Stainless steel mounting hardware
- 6000K daylight white

13 LEDS **3800** RAW LUMEN **1988** EFFECTIVE LUMEN OUTPUT

Weight 1.6 lbs.
Dimensions 5" W x 8" H x 2.5" D
VOLT/AMP 12.8VDC - 3.25A, 24.0VDC - 1.63A



TLL41FS

Rubber Housing Utility Light



- Flood beam pattern
- Polycarbonate lens
- Rubber housing
- IP67 rating
- Stainless steel mounting hardware
- 6400K daylight white

7 LEDS **1920** RAW LUMEN **1030** EFFECTIVE LUMEN OUTPUT

Weight 1.16 lbs.
Dimensions 4.85" Dia x 2.85" D
VOLT/AMP 12.8VDC - 1.19A, 24.0VDC - 0.63A



TLL145FS

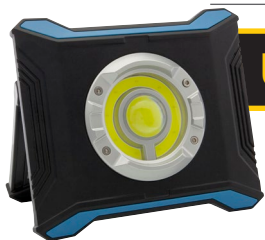
Utility/Work Light



- Flood beam pattern
- Polycarbonate lens
- Die cast aluminum housing with powder coat finish
- IP67 rating
- Stainless steel mounting hardware
- 6000K daylight white

7 LEDS **1800** RAW LUMEN **900** EFFECTIVE LUMEN OUTPUT

Weight .89 lbs.
Dimensions 3.938" W x 4.75" H x 2.5" D
VOLT/AMP 12.8VDC - 1.2A, 24.0VDC - 0.64A



UCL73CS

Rechargeable, Cordless Utility Light



- Spot/Flood/Emergency beam patterns
- Polycarbonate lens
- Aluminum/ABS housing
- IP65 rating
- Stainless steel mounting hardware
- 6900K daylight white

COB LEDS **1600** RAW LUMEN **1283** EFFECTIVE LUMEN OUTPUT

Weight 1.27 lbs.
Dimensions 6.5" W x 5.75" H x 1.75" D
VOLT/AMP 5V - 4.2A



Solid State Electronics for Dependable Performance



Aluminum Housing for Durability



Polycarbonate Lens Resists Damage



Dual Voltage 9-36V Range



Dust and Water Resistant

Mini Utility Light Set

TLL153FK

- Flood beam pattern
- Polycarbonate lens
- Die cast aluminum housing with powder coat finish
- IP67 rating
- Stainless steel mounting hardware
- 5900K daylight white



Weight .55 lbs.
 Dimensions 2.75" W x 3.438" H x 1.5" D
 VOLT/AMP 12.8VDC - 1.19A, 24.0VDC - 0.63A

9 LEDS*

1340 RAW | 1080 EFFECTIVE LUMEN OUTPUT

* Per Light

Low Profile Flood Light

UCL26CS

- Flood beam pattern
- Polycarbonate lens
- Die cast aluminum housing with powder coat finish
- IP67 rating
- Stainless steel mounting hardware
- 6500K daylight white



Weight 1.0 lbs.
 Dimensions 6.25" W x 1.8" H x 2.0" D
 VOLT/AMP 12.8VDC - 1.25A, 24.0VDC - 0.67A

6 LEDS

1200 RAW | 640 EFFECTIVE LUMEN OUTPUT



Off-Road Spot Light

UCL28CS

- Spot beam pattern
- Polycarbonate lens
- Die cast aluminum housing with powder coat finish
- IP65 rating
- Zinc plated mounting hardware
- 6000K daylight white



Weight 0.89 lbs.
 Dimensions 3.75" W x 3.15" H x 2.52" D
 VOLT/AMP 12.8VDC - 0.81A, 24.0VDC - 0.43A

6 LEDS

1100 RAW | 770 EFFECTIVE LUMEN OUTPUT



Mini Scene Light

UCL42CS

- 45° Flood/Scene beam pattern
- Polycarbonate lens
- Die cast aluminum housing with powder coat finish
- IP67 rating
- Stainless steel mounting hardware




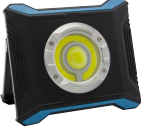






Weight 1.0 lbs.
 Dimensions 4.33" W x 2" H x 1.38" D
 VOLT/AMP 12.8VDC - 0.82A, 24.0VDC - 0.44A

6 LEDS

1000 RAW | 465 EFFECTIVE LUMEN OUTPUT



								
Raw Lumen	3800	1920	1800	1600	1340*	1200	1100	1000
Effective Lumen	1988	1030	900	1283	1080*	640	770	465
Retail P/N	TLL42FS	TLL41FS	TLL145FS	UCL73CS	TLL153FK	UCL26CS	UCL28CS	UCL42CS
LEDS	13 SMD	7 SMD	7 SMD	COB	9 SMD*	6 SMD	6 SMD	6 SMD
Beam	Flood	Flood	Flood	Spot/Flood/ Emergency	Flood	Flood	Spot	45° Flood/ Scene
Lens	Poly-carbonate	Poly-carbonate	Poly-carbonate	Poly-carbonate	Poly-carbonate	Poly-carbonate	Poly-carbonate	Poly-carbonate
Housing	Aluminum	Rubber	Aluminum	Aluminum/ ABS	Aluminum	Aluminum	Aluminum	Aluminum
Hardware	Stainless Steel	Stainless Steel	Stainless Steel	NA	Stainless Steel	Stainless Steel	Zinc Plated	Stainless Steel
Weight	1.6 lbs.	1.16 lbs.	.89 lbs.	1.27 lbs.	.55 lbs.	1.0 lbs.	0.89 lbs.	1.0 lbs.
Dims	5" dia. 8"H 2.5" D	4.85 dia" 2.85" D	3.938" W 4.75" H 2.5" D	6.5" W 5.75" H 1.75" D	2.75" W 3.438" H 1.5" D	6.25" W 1.8" H 2.0" D	3.75" W 3.15" H 2.52" D	4.33" W 2" H 1.38" D
IP Rating	IP67	IP67	IP67	IP65	IP67	IP67	IP65	IP67
Amp Draw 12.8VDC	3.25A	1.19A	1.2A	NA	1.19A	1.25A	0.81A	0.82A
Amp Draw 24VDC	1.63A	0.63A	0.64A	NA	0.63A	0.67A	0.43A	0.44A

* per light



Optronics offers attention-getting retail packaging designs and displays that put lighting front and center.

For more information on our comprehensive array of merchandising options, visit:

[optronicsinc.com/RESOURCES/
Merchandising.aspx](http://optronicsinc.com/RESOURCES/Merchandising.aspx)



(800) 364-5483
www.optronicsinc.com

ZH2020L